



## *Weathering the Perfect Economic Storm*

Like many non-profits and school districts in Michigan, the CMRJI was buffeted by funding issues from the economic storm sweeping our state. For example:

- Budget cuts nearly halved our number of participating schools, from 19 last year to our current 10.
- These cuts have also slashed the number of hours RJ Practitioners can work in the schools. (Some practitioners are working only two half-days a week.)
- Uncertainty with regulatory and other approvals led the Lansing School District to delay the CMRJI start date nearly two months into the school year.

After clear sailing and amazing growth over our five year history, the horizon looked very bleak for the CMRJI.

*But . . .*

Against all these odds, the RJ Practitioners of the CMRJI rallied! Since the last week of October 2009, they have been serving their schools with professionalism, passion and unerring dedication. As a result, the CMRJI is engaging students, staff and families at near-record levels in the schools we serve.

As the graphs on page 2 predict, the CMRJI does not expect to serve as many students this year as we did last. Our results, however, are amazing given the limitations we've faced. Already in just four months, the CMRJI has resolved 327 cases, engaging 837 students and 52 parents or adult supporters.

While funding uncertainties still loom, the dedicated professionals of the CMRJI are far from washed up. Hats off to the RJ Practitioners who are keeping the Restorative Justice ship on course despite the battering the CMRJI has received from this perfect economic storm!

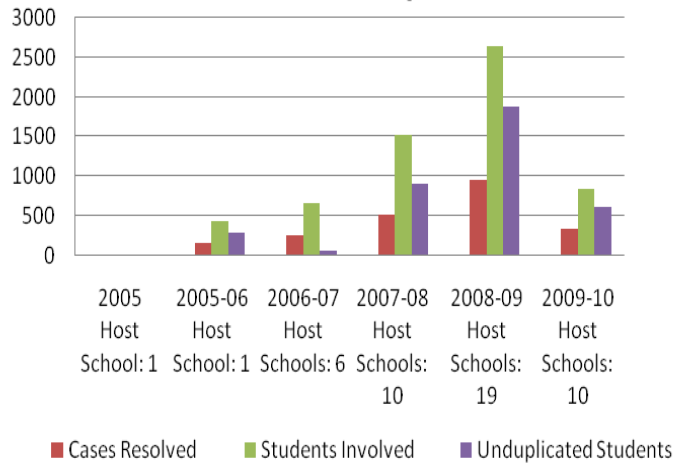
### RJ Quote of the Month:

"I got to hear everyone's story as we solved it, and now we're friends.

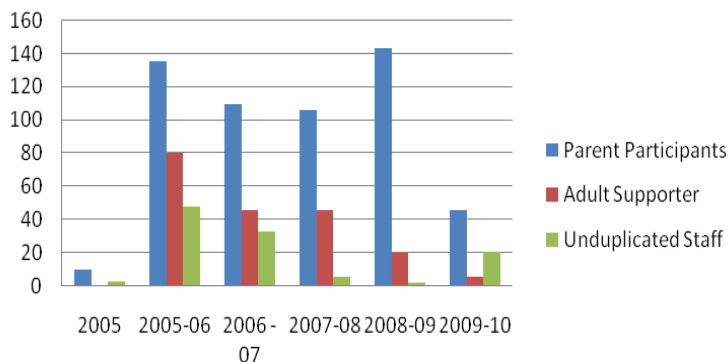
– 5<sup>th</sup> grade, Glencairn

## CMRJI Five-Year History Charted

### Five Year Summary of CMRJI Case and Student Participation Data



### Five Year Summary of CMRJI Adult Participation



## Training Opportunities

**May 4 & 5, 2010**  
**Restorative Conferencing**  
 8:00 a.m. to 4:30 p.m.  
 Registration fee: \$150, per person.

**May 11, 2010**  
**Restorative Circles**  
 8:00 a.m. to 4:30 p.m.  
 Registration fee: \$75 per person

Both trainings will take place at  
**Russ Maples Conference Center**  
 In the Hill Academic Center  
 5815 Wise Road, Lansing  
 48911

Registration fees include full days of training with lunch, light refreshments, books and materials.

For more information, please see the training page on our website ([www.centralmichiganrestorativejustice.com](http://www.centralmichiganrestorativejustice.com)) or contact Nancy Schertzing at 517.755.2814.

## Contact Information

The Central Michigan Restorative Justice Initiative (CMRJI) is part of the Resolution Services Center of Central Michigan. It is funded by grants from the Capital Area United Way, Lansing School District, Ingham County Juvenile Justice Millage, East Lansing Public Schools and the East Lansing Kiwanis Foundation.

**Resolution Services Center of Central Michigan**  
 229 N. Pine St.  
 Lansing, MI 48933

Phone: (517) 485-2274  
 Fax: (517) 485-1183  
 Email: [drccm@tds.net](mailto:drccm@tds.net)

**Central Michigan Restorative Justice Initiative**  
 5815 Wise Road  
 Lansing, MI 48911

Phone: (517) 755-2814  
 Fax: (517) 755-2809  
 Email: [centralmichiganrj@gmail.com](mailto:centralmichiganrj@gmail.com)